



ENVIRONMENTAL PRODUCT DECLARATION

in accordance with ISO 14025 and EN 15804:2012 + A2:2019

ELVIAL SL46 SI² CLASSIC, ELVIAL SL46 SI² FLAT EDITION and ELVIAL SL46 SI²_MD - Sliding system –
Double glazing



Owner of the declaration:

Publisher and Programme holder:

Declaration number:

Issue date:

Valid until

EUROPEAN ALUMINIUM

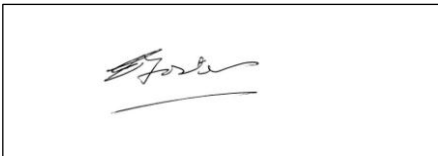
EPD-2024-0010

2024-04-15

2029-04-14

www.european-aluminium.eu

GENERAL INFORMATION

Owner of the declaration	HELLENIC ALUMINIUM INDUSTRY S.A. "ELVIAL S.A." 25th Km, Thessalonikis National Rd. Nea Santa Kilkis 611 00 Greece, ELVIAL Contact person: Panagiotis Plakotaris, Quality Assurance Manager, mail: p.plakotaris@elvial.gr						
Manufacturer	HELLENIC ALUMINIUM INDUSTRY S.A. "ELVIAL S.A." 25th Km, Thessalonikis National Rd. Nea Santa Kilkis 611 00 Greece. T. 23410 39500 – F: 23410 64173						
Publisher and Programme holder	EUROPEAN ALUMINIUM AISBL Avenue des Nerviens 85, 1040 Brussels, Belgium Paul Voss, Director General						
The declaration is based on the Product Category Rules	European Aluminium General Programme Instructions version 3, 23 rd of September 2020						
Declared Unit	1 m ² of ELVIAL SL46 SI ² CLASSIC SLIDING SYSTEM						
Scope of the Environmental Product Declaration	This EPD covers 1 m ² of Sliding system type ELVIAL SL46 SI ² CLASSIC, ELVIAL SL46 SI ² FLAT and ELVIAL SL46 SI ² _MD. These EPD results have been calculated from an LCA tool for EPD, based on the GaBi database, initially realised by Thinkstep in 2013 and updated by Ecoinnovazione in 2019. Among the product family, one representative product has been selected and corresponding EPD results have been calculated based on specific bill of materials. This product refers to double glazing Sliding system. The results generated by the collective tool can be considered as a good proxy to model the Sliding system produced by Elvial. UN CPC 54710 Glazing Services. The EPD may be used in a B2B context within the European Market.						
Liability	The owner of the declaration is liable for the underlying manufacturing information and European Aluminium is not liable in this respect.						
Disclaimers	This EPD cannot be used as a guarantee of the recycled content of the actual product sold on the market. A specific declaration may be asked from the supplier. The use of this EPD within BIM tools is in principle limited to the products explicitly included in the EPD. The scaling of results to model similar products can only be done if justified and transparently reported in the project report. Any responsibility regarding the misuse of this EPD by third parties is not accepted by the Programme Operator.						
Verification	Verifier						
<table border="1"> <tr> <td colspan="2">EN15804:2012 +A2:2019 serves as core PCR completed by European Aluminium PCR 03/2020</td> </tr> <tr> <td colspan="2">Verification of the EPD by an independent third party in accordance with ISO 14025</td> </tr> <tr> <td><input type="checkbox"/> Internally</td> <td><input checked="" type="checkbox"/> Externally</td> </tr> </table>		EN15804:2012 +A2:2019 serves as core PCR completed by European Aluminium PCR 03/2020		Verification of the EPD by an independent third party in accordance with ISO 14025		<input type="checkbox"/> Internally	<input checked="" type="checkbox"/> Externally
EN15804:2012 +A2:2019 serves as core PCR completed by European Aluminium PCR 03/2020							
Verification of the EPD by an independent third party in accordance with ISO 14025							
<input type="checkbox"/> Internally	<input checked="" type="checkbox"/> Externally						
							

1 PRODUCT

1.1 Product description and applications

This Environmental Product Declaration (EPD) is for business-to-business communication. The product objects of the EPD are ELVIAL SL46 SI² CLASSIC, ELVIAL SL46 SI² FLAT EDITION and ELVIAL SL46 SI²_MD.

ELVIAL SL46 SI² CLASSIC: An aluminium profile solution that comes in both lift and slide and sliding editions and responds to various design requirements. Being versatile and aesthetically balanced, it has been integrated into numerous high-profile and private residence projects. The system's sash width is only 46mm making it a beautiful and highly functional option for every project.

ELVIAL SL46 SI² FLAT EDITION: This edition of the SL46 is another great option for a lift and slide or sliding aluminium system. It provides reliable thermal insulation and remarkable rolling quality. The undisputable functional features are matched by a design that withstands the architectural trends and allows for the creation of spacious openings.

ELVIAL SL46 SI²_MD: The SL46 SI²_MD is a sliding aluminium system fitted with technologies of insulation that ensure energy efficiency and equipped with special, stainless-steel rollers, which will prove its value over time.

The three products possess identical profile features, incorporating thermal breaks and gasket materials, but they differ in size and functionality, specifically in their tilt-and-turn mechanisms, and in the mass of aluminium used. They are available as double-glazed units with an 8 mm gap.

The representative products are a double-glazing Sliding system of 2.18 m high and 3 m width. EPD results have been calculated for 1 representative product (detailed in Table 1), which is the one with the highest impacts following the European Aluminium General Programme Instructions Version 3.

Table 1 Details representative products

ID	Model	Size (W x H)	Glazing	Glass surface area (m ²)	Glass thickness (mm)
1	ELVIAL SL46 SI ² CLASSIC – Double glazing	2.18 m x 3 m	Double	5.4	8 mm

1.2 Technical Data

The most relevant technical data are reported in Table 2.

Table 2 Most relevant technical data

Category	Description & value	Standards
Thermal Insulation	3.5 W/m ² K	EN ISO 10077-2
Air permeability	CLASS 4	EN 12207
Water tightness	CLASS 7A	EN 12208
Wind load resistance	CLASS C1/B2	EN 12210
Burglar resistance	WK2	EN 1627-1630

For the most up-to-date values of the technical data, please refer to the product specifications available on the Elvial website ([Windows | Elvial](#)).

The most relevant standard for applications of aluminium Sliding system in buildings is EN 14351.

1.3 Process description

The entire installation process is typically performed at the job site.

The following operations are carried out for the production of the main parts:

1. Aluminium profile (powder coated) preparation mainly via sawing and milling.
2. Frame production by assembling the various profiles via connectors and fixing via bolting or gluing. Connectors used are mostly composed of aluminium.
3. Positioning and fixing the various gaskets.
4. Infill application (e.g., glazing, opaque panels).
5. The hardware integration (if relevant).

The main background production processes are reported in Figure 1.

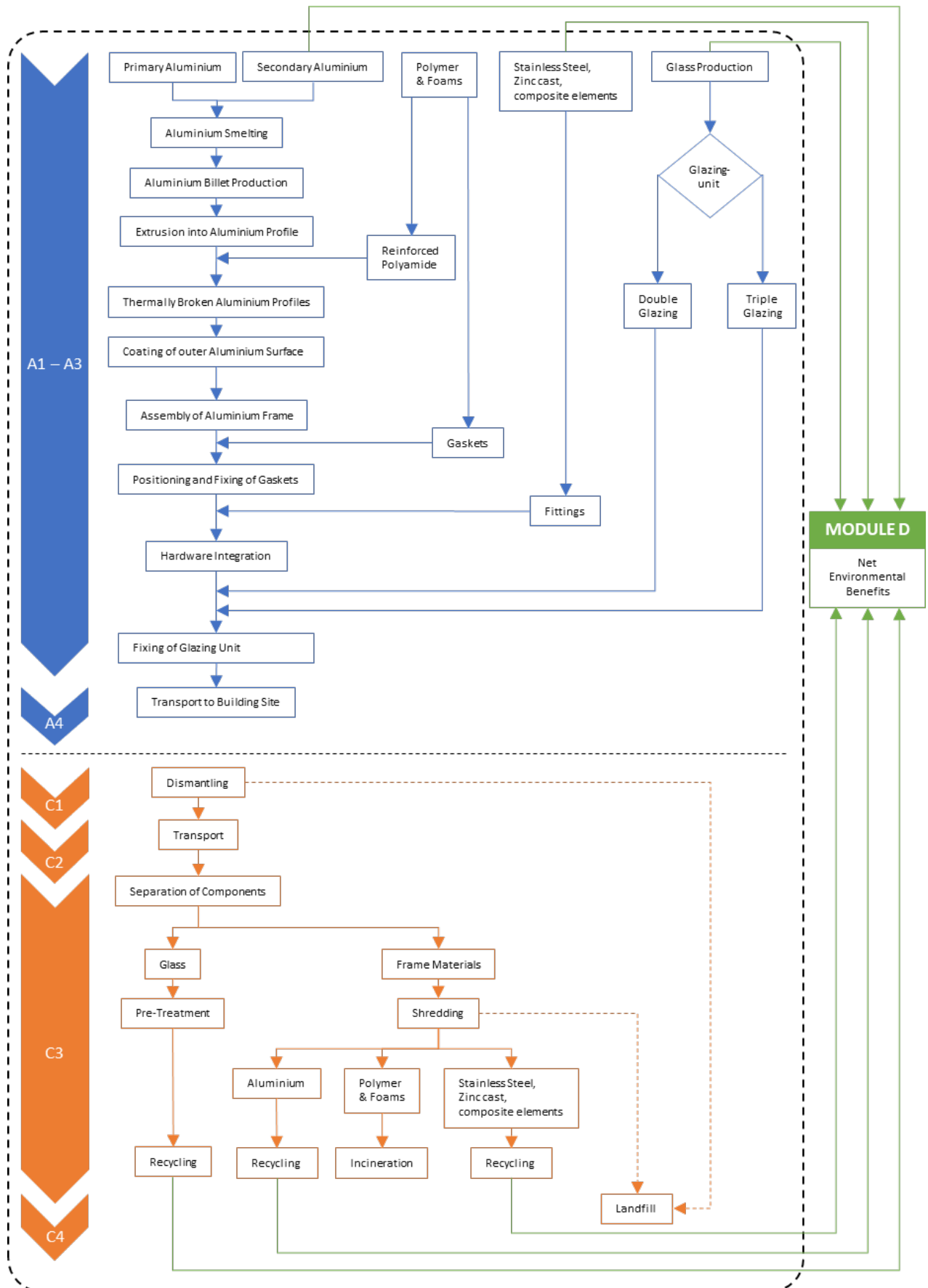


Figure 1 Main production processes and components of the Sliding system

The upstream aluminium processes have been modelled using European Aluminium LCI datasets for the primary aluminium production, recycling and remelting as described in the European Aluminium Environmental profile report 2018.

For the other processes and materials, e.g., gaskets, glass unit or hardware, datasets from the GaBi database have been used. The powder coating of aluminium profiles has been modelled using GaBi datasets as well.

At end-of-life, thanks to their high price value (i.e., about 50% of the LME price) aluminium frames and profiles are systematically dismantled and collected for sending them to recycling. After being collected, the Sliding systems are treated through shredding and sorting. However, the glazing unit might not be systematically collected at the building renovation or demolition site. Hence, two extreme end-of-life scenarios have been used for flat glass: 100% recycling or 100% landfilling.

1.4 Health and safety aspects during production and installation

There are no critical health and safety aspects during the production of aluminium Sliding system. The pre-treatments used for the pre-treatment of aluminium profile do not contain chromium nor other substances of very high concern (SVHC substances), and this process is followed by a coating process realised using a powder without VOC.

There are no relevant aspects of occupational health and safety during the further processing and installation of Elvial Sliding system. Under normal installation, no measurable environmental impacts can be associated with the use of Elvial Sliding system. The appropriate safety measures need to be taken at the building site, especially if installation takes place on a high-rise building.

1.5 Reference service life

Since the use phase is not modelled, no specific information is provided about the Reference Service Life. In normal use, aluminium building products are not altered or corroded over time. A regular cleaning (e.g. once a year) of the product suffices to secure a long service life. However, the use of highly alkaline (pH >10) or highly acidic (pH < 4) cleaning solutions should be avoided. In practice, a service life of 50 years can be assumed in normal use for such application, except for the IGU (Insulated Glass Unit) which needs to be replaced usually after 30 years due to slow degradation of its performance.

2 LCA – CALCULATION RULES

2.1 Declared unit & bill of materials

The Bill of Materials of the four analysed products is reported in Table 3. The declared unit corresponds to 1 m² of ELVIAL SL46 SI² CLASSIC.

Table 3 Bill of materials (kg) of the declared unit for 1 m² of product

Reference		
Type	ELVIAL SL46 SI ² CLASSIC – Double glazing	
	kg	%
Glass	16.5	63.04%
Aluminium	7.64	29.19%
Metal parts	0.66	2.54%
Thermal break	0.52	1.99%
Gasket	0.43	1.65%
Polymers	0.42	1.59%
Foams	0.00	0.00%
Total	26.17	100%

2.2 System boundary

This EPD is from cradle to gate with modules C1-C4 and module D, as reported in Table 4.

The production stage (modules A1-A3) includes processes that provide materials and energy input for the system, manufacturing and transport processes up to the factory gate, as well as waste processing. For the end-of-life, the default scenario defined in the General Product Instructions and detailed in 3.2 is applied.

Table 4 Modules declared

Production			Installation		Use stage							End-of-Life				Next product system
Raw material	Transport	Manufacturing	Transport to	Installation	Use	Maintenance	Repair	Replacement	Refurbishment	Operational energy	Operational water	Deconstruction	Transport	Waste processing	Disposal	Reuse, recovery, recycling potential
A1	A2	A3	A4	A5	B1	B2	B3	B4	B5	B6	B7	C1	C2	C3	C4	D
X	X	X	X	ND	ND	ND	ND	ND	ND	ND	ND	X	X	X	X	X

Note: ND: Not Declared; X: Module included in the LCA.

Module A4 is declared for a distance of 1 km to give the possibility to adjust the resulting Environmental impacts depending on the specific distance at hand.

2.3 Energy mix

In the model developed, the background electricity mix used is the European electricity mix (EU-28 Electricity grid mix (2017)). Details about the electricity modelling in the datasets: production of primary aluminium, extrusion, rolling and recycling please refer to the Environmental Profile Report 2018.

2.4 Allocation

The scrap which is produced along the production chain is recycled into the same production chain and is modelled as “closed-loop” within Module A. This recycling loop has been modelled in the GaBi model so that the highly insulated system is the only product exiting the gate. Hence, the production process does not deliver any co-products.

At the end-of-life stage, the Sliding system are sent to an end-of-life treatment which is modelled according to the scenario reported in 3.2. The environmental burdens and benefits of recycling and energy recovery are calculated in module D accordingly.

2.5 Assumptions and Cut-off criteria

The aluminium profiles were composed of a mix of 60% primary aluminium and 40% recycled aluminium. For the primary aluminium, a primary aluminium ingot consumption mix was considered (European production + net fraction of imports into Europe). Alloying systems were not considered, and a pure aluminium profile has been assumed as a proxy.

2.6 Data quality

Representativeness

Technological: All primary and secondary data were modelled to be specific to the technologies or technology mixes under study. Where technology-specific data were unavailable, proxy data were used. For the aluminium production, extrusion profiles and recycling, the datasets described in the Environmental Profile Report 2018 of European Aluminium have been used. The modelling reflects the specific BoM of the analysed products. Technological representativeness is considered to be very good.

Geographical: All primary data were collected specifically to the countries under study. Regarding secondary data, where EU region-specific data were unavailable, DE datasets were used. For the aluminium production, extrusion profiles and recycling, the datasets described in the Environmental Profile Report 2018 of European Aluminium have been used. Geographical representativeness is considered to be good.

Temporal: Primary data refer to the year 2020, and all secondary data come from the GaBi version 2021.2, including those on aluminium production, which are the most recent ones as described in the Environmental Profile Report 2018 of European Aluminium.

Completeness

All known operating data was taken into consideration in the analysis. Based on earlier studies conducted by European Aluminium, it can be assumed that the ignored processes or flows contribute to much less than 5% of the impact categories under review.

The process chain is considered sufficiently complete regarding the goal and scope of this study.

Overall, the data quality can be described as good.

2.7 Software and databases

These EPD results have been calculated from an LCA tool for EPD, based on the GaBi database. Currently, the EPD software is using the software GaBi version 2021.2.

2.8 Comparability

As a general rule, a comparison or evaluation of EPD data may be possible when all of the data to be compared has been drawn up in accordance with EN 15804 and the building context or product-specific characteristics are taken into consideration.

3 LCA – SCENARIOS AND ADDITIONAL INFORMATION

3.1 Scenario for additional modules

Module A4 is taken into consideration in this Declaration, and it has been modelled according to the information reported in Table 5.

Table 5 Module A4 – Transport to the building site

Scenario information	Unit (expressed per DU)
Fuel type and consumption of vehicle or vehicle type used for transport e.g. long-distance truck, boat, etc.	Truck-trailer, Euro 4, 34 - 40t gross weight / 27t payload capacity, diesel driven
Distance	1 km
Capacity utilisation (including empty returns)	61 %
Bulk density of transported products	-
Volume capacity utilisation factor (factor = 1 or <1 or ≥1 for compressed or nested packaged products)	Not applicable

3.2 Scenario for Mod. C1-C4

The default scenario for the end-of-life of the Sliding system, as reported in the General Programme Instructions, is the following:

- collection rate: 99%;
- shredding efficiency: 95%;
- scrap recycled through refining process: 96,5%
- overall aluminium recycling rate: 91%

For the glass used in the Sliding system, two extreme end-of-life scenarios were modelled: one with 100% recycling of the glass and one with 100% landfill of the glass.

Table 6 reports the main parameters of the end-of-life scenarios for the main materials and components.

Table 6 Parameters of the end-of-life scenarios for the main materials and components, related to ELVIAL SL46 SI² CLASSIC SLIDING SYSTEM

Processes		Unit (expressed per FU or DU of components, products or materials and by type of material)		ELVIAL SL46 SI ² CLASSIC – Double glazing	
				Scenario 100% glass landfill	Scenario 100% glass recycling
Collection process specified by type	Kg collected separately	Glass: 16.5 kg			
		Aluminium frame: 7.57 kg			
		Gasket: 0.43 kg			
		Metal fittings and others: 1.59 kg			
	Kg collected with mixed construction waste	0			
Recovery system specified by type	Kg for re-use	0			
	Kg for recycling	0	Glass: 16 kg		
		Aluminium frame: 6.76 kg			
		Metal fittings: 0.51 kg			
	Kg for energy recovery	Gasket: 0			
Others: 0					
Disposal specified by type	Kg product or material for final deposition	Landfill (aluminium)	Aluminium frame: 0.43 kg		
		Landfill (inert materials)	Fittings and others: 0.12 kg		
		Waste incineration	Gasket: 0.41 kg		
		Waste incineration (plastics)	Fittings and others: 0.88 kg		
		Landfill	Glass: 16.5 kg	0	

Note to Table 6:

Material collected separately: This amount refers to the waste stream collected separately per material before being subjected to shredding

Material for recycling: This amount refers to the waste stream sent to recycling per material after the shredding and/or sorting process.

Material for final deposition – aluminium: this amount includes the aluminium not collected separately and the shredding losses.

3.3 Scenario Mod. D

Module D includes:

- a transport from the scrap dealers to the recycling plants, considering an average distance of 200 km;
- recycling of Aluminium through refining;
- a net credit for the avoided production of primary aluminium;
- a net credit for the avoided production of flat glass (for 100% glass recycling scenario)

The calculation of module D has been implemented in line with the General Programme Instructions of European Aluminium, thus based on the difference between the scrap used at the input and output side. In some cases, this may result in environmental burdens instead of environmental benefits if the product system is a net consumer of valuable secondary material.

3.4 Additional environmental information

During use, the air quality, i.e. VOC emission, is not affected by the Sliding system. In case of fire, aluminium is a non-combustible construction material (European Fire Class A1) in accordance with Commission Decision 96/603/EC and does therefore not make any contribution to fire.

4 LCA RESULTS – ELVIAL SL46 SI² CLASSIC SLIDING SYSTEM – Double glazing

4.1 Result of the LCA – Environmental impacts

The tables below report the results of the LCA study for the two glass scenarios: 100% recycling and 100% landfill.

4.1.1 Core Environmental impact indicators

Scenario 100% glass recycling

Table 7 Core Environmental impact indicators for 1 m² ELVIAL SL46 SI² CLASSIC SLIDING SYSTEM – Double glazing, *scenario 100% glass recycling*

Impact category	Unit	A1-A3	A4	C1	C2	C3	C4	D
GWP - total	kg CO ₂ eq.	8.99E+01	1.62E-03	8.20E-02	3.31E-01	1.04E+00	2.85E+00	-2.91E+01
GWP – fossil	kg CO ₂ eq.	8.96E+01	1.61E-03	8.12E-02	3.30E-01	8.66E-01	2.85E+00	-2.90E+01
GWP – biogenic	kg CO ₂ eq.	2.29E-01	-5.97E-06	6.64E-04	-1.22E-03	1.64E-01	4.03E-05	-5.87E-02
GWP - luluc	kg CO ₂ eq.	3.41E-02	9.70E-06	1.01E-04	1.99E-03	5.48E-03	1.01E-04	-6.37E-03
ODP	kg CFC 11 eq.	5.36E-10	2.84E-16	1.19E-12	5.82E-14	-1.16E-12	7.60E-13	-1.51E-10
AP	mol H ⁺ eq.	4.22E-01	1.12E-05	2.16E-04	2.29E-03	1.57E-03	2.08E-03	-1.57E-01
EP - freshwater	kg PO ₄ ³⁻ eq.	3.24E-04	3.78E-09	2.77E-07	7.75E-07	2.81E-06	1.46E-06	-2.00E-05
EP - marine	kg N eq.	1.03E-01	5.58E-06	7.02E-05	1.14E-03	8.61E-04	9.90E-04	-2.41E-02
EP - terrestrial	mol N eq.	1.14E+00	6.17E-05	7.56E-04	1.26E-02	9.78E-03	1.13E-02	-3.08E-01
POCP	kg NMVOC eq.	2.78E-01	1.06E-05	1.92E-04	2.17E-03	1.54E-03	2.56E-03	-6.70E-02
ADP-MM (**)	kg Sb eq.	5.27E-04	1.15E-10	1.11E-08	2.35E-08	1.23E-07	7.66E-09	-7.19E-04
ADPF (**)	MJ	1.24E+03	2.20E-02	1.57E+00	4.51E+00	3.93E+00	2.09E+00	-3.53E+02
WDP (**)	m ³	2.28E+01	8.44E-06	1.45E-02	1.73E-03	6.87E-02	2.89E-01	-3.97E+00

Note: GWP – Global Warming Potential; ODP – Ozone Depletion; AP – acidification potential for soil and water; EP – Eutrophication potential; POCP – formation potential of tropospheric ozone; ADP - MM – abiotic depletion potential for non fossil resources; ADPF – Abiotic depletion potential for fossil resources; WDP – Water deprivation potential.

(**) **Disclaimer:** the results of this Environmental impacts indicator shall be used with care as the uncertainties on these results are high or as there is limited experience with the indicator.

Scenario 100% glass landfill

Table 8 Core Environmental impact indicators for 1 m² ELVIAL SL46 SI² CLASSIC SLIDING SYSTEM – Double glazing, scenario 100% glass landfill

Impact category	Unit	A1-A3	A4	C1	C2	C3	C4	D
GWP - total	kg CO ₂ eq.	8.99E+01	1.62E-03	8.20E-02	1.78E-01	2.93E-01	3.09E+00	-1.91E+01
GWP – fossil	kg CO ₂ eq.	8.96E+01	1.61E-03	8.12E-02	1.78E-01	2.91E-01	3.10E+00	-1.91E+01
GWP – biogenic	kg CO ₂ eq.	2.29E-01	-5.97E-06	6.64E-04	-6.59E-04	1.80E-03	-7.22E-03	-5.27E-02
GWP - luluc	kg CO ₂ eq.	3.41E-02	9.70E-06	1.01E-04	1.07E-03	7.08E-04	8.35E-04	-2.97E-03
ODP	kg CFC 11 eq.	5.36E-10	2.84E-16	1.19E-12	3.13E-14	9.13E-15	7.61E-13	-1.39E-10
AP	mol H ⁺ eq.	4.22E-01	1.12E-05	2.16E-04	1.23E-03	4.98E-04	3.86E-03	-1.04E-01
EP - freshwater	kg PO ₄ ³⁻ eq.	3.24E-04	3.78E-09	2.77E-07	4.17E-07	1.23E-06	1.88E-06	-1.18E-05
EP - marine	kg N eq.	1.03E-01	5.58E-06	7.02E-05	6.16E-04	1.40E-04	1.45E-03	-1.43E-02
EP - terrestrial	mol N eq.	1.14E+00	6.17E-05	7.56E-04	6.81E-03	1.46E-03	1.64E-02	-1.56E-01
POCP	kg NMVOC eq.	2.78E-01	1.06E-05	1.92E-04	1.17E-03	3.52E-04	3.96E-03	-4.37E-02
ADP-MM (**)	kg Sb eq.	5.27E-04	1.15E-10	1.11E-08	1.27E-08	1.10E-07	3.12E-08	-7.19E-04
ADPF (**)	MJ	1.24E+03	2.20E-02	1.57E+00	2.43E+00	3.67E+00	5.40E+00	-2.42E+02
WDP (**)	m ³	2.28E+01	8.44E-06	1.45E-02	9.31E-04	6.52E-03	3.16E-01	-2.99E+00

Note: GWP – Global Warming Potential; ODP – Ozone Depletion; AP – acidification potential for soil and water; EP – Eutrophication potential; POCP – formation potential of tropospheric ozone; ADP - MM – abiotic depletion potential for non fossil resources; ADPF – Abiotic depletion potential for fossil resources; WDP – Water deprivation potential.

(**) **Disclaimer:** the results of this Environmental impacts indicator shall be used with care as the uncertainties on these results are high or as there is limited experience with the indicator.

4.1.2 Additional Environmental impact indicators

Scenario 100% glass recycling

Table 9 Additional Environmental impact indicators for 1 m² ELVIAL SL46 SI² CLASSIC SLIDING SYSTEM – Double glazing, scenario 100% glass recycling

Impact category	Unit	A1-A3	A4	C1	C2	C3	C4	D
Particular Matter emissions	Disease incidence	4.52E-06	3.71E-11	2.06E-09	7.60E-09	3.82E-09	1.06E-08	-2.02E-06
Ionising radiation - human health (*)	[kBq U235 eq.]	8.27E+00	2.37E-06	3.59E-02	4.86E-04	-3.87E-02	8.19E-03	-3.16E+00
Eco-toxicity (freshwater) (**)	[CTUe]	1.69E+03	1.64E-02	7.57E-01	3.35E+00	5.21E+00	1.17E+00	-9.75E+02
Human toxicity - cancer effects (**)	[CTUh]	3.61E-07	3.27E-13	2.31E-11	6.69E-11	3.92E-11	6.13E-11	-4.76E-09
Human toxicity - non-cancer effects (**)	[CTUh]	1.77E-06	1.76E-11	6.75E-10	3.61E-09	5.38E-09	5.01E-09	-6.74E-08
Land Use related impacts/ Soil quality (**)	dimensionless	2.03E+02	7.81E-03	6.08E-01	1.60E+00	4.14E+00	4.33E-01	-2.03E+01

(*) **Disclaimer:** This impact category deals mainly with the eventual impact of low dose ionizing radiation on human health of the nuclear fuel cycle. It does not consider effects due to possible nuclear accidents, occupational exposure nor due to radioactive waste disposal in underground facilities. Potential ionizing radiation from the soil, from radon and from some construction materials is also not measured by this indicator.

(**) **Disclaimer:** the results of this Environmental impacts indicator shall be used with care as the uncertainties on these results are high or as there is limited experience with the indicator.

Scenario 100% glass landfill

Table 10 Additional Environmental impact indicators for 1 m² ELVIAL SL46 SI² CLASSIC SLIDING SYSTEM – Double glazing, scenario 100% glass landfill

Impact category	Unit	A1-A3	A4	C1	C2	C3	C4	D
Particular Matter emissions	Disease incidence	4.52E-06	3.71E-11	2.06E-09	4.09E-09	3.67E-09	3.27E-08	-1.46E-06
Ionising radiation - human health (*)	[kBq U235 eq.]	8.27E+00	2.37E-06	3.59E-02	2.62E-04	3.41E-02	1.18E-02	-2.88E+00
Eco-toxicity (freshwater) (**)	[CTUe]	1.69E+03	1.64E-02	7.57E-01	1.81E+00	1.47E+00	3.05E+00	-8.24E+01
Human toxicity - cancer effects (**)	[CTUh]	3.61E-07	3.27E-13	2.31E-11	3.61E-11	2.03E-10	3.40E-10	-3.16E-09
Human toxicity - non-cancer effects (**)	[CTUh]	1.77E-06	1.76E-11	6.75E-10	1.94E-09	1.67E-09	3.57E-08	1.15E-07
Land Use related impacts/ Soil quality (**)	dimensionless	2.03E+02	7.81E-03	6.08E-01	8.62E-01	1.82E+00	1.10E+00	-1.27E+01

(*) **Disclaimer:** This impact category deals mainly with the eventual impact of low dose ionizing radiation on human health of the nuclear fuel cycle. It does not consider effects due to possible nuclear accidents, occupational exposure nor due to radioactive waste disposal in underground facilities. Potential ionizing radiation from the soil, from radon and from some construction materials is also not measured by this indicator.

(**) **Disclaimer:** the results of this Environmental impacts indicator shall be used with care as the uncertainties on these results are high or as there is limited experience with the indicator.

4.2 Result of the LCA – Resource use

The tables below report the results of the resource use for the two glass scenarios: 100% recycling and 100% landfill.

Scenario 100% glass recycling

Table 11 Resource use for 1 m² ELVIAL SL46 SI² CLASSIC SLIDING SYSTEM – Double glazing, scenario 100% glass recycling

Parameter	Unit	A1-A3	A4	C1	C2	C3	C4	D
PERE	MJ	3.39E+02	1.42E-03	8.25E-01	2.92E-01	1.01E+00	4.29E-01	-1.16E+02
PERM	MJ	0.00E+00	0.00E+00	0.00E+00	0.00E+00	0.00E+00	0.00E+00	0.00E+00
PERT	MJ	3.39E+02	1.42E-03	8.25E-01	2.92E-01	1.01E+00	4.29E-01	-1.16E+02
PENRE	MJ	1.19E+03	2.20E-02	1.57E+00	4.51E+00	3.94E+00	2.09E+00	-3.53E+02
PENRM	MJ	4.16E+01	0.00E+00	0.00E+00	0.00E+00	0.00E+00	0.00E+00	0.00E+00
PENRT	MJ	1.24E+03	2.20E-02	1.57E+00	4.51E+00	3.94E+00	2.09E+00	-3.53E+02
SM	kg	3.26E+00	0.00E+00	0.00E+00	0.00E+00	0.00E+00	0.00E+00	0.00E+00
RSF	MJ	0.00E+00	0.00E+00	0.00E+00	0.00E+00	0.00E+00	0.00E+00	0.00E+00
NRSF	MJ	0.00E+00	0.00E+00	0.00E+00	0.00E+00	0.00E+00	0.00E+00	0.00E+00
FW	m ³	7.18E-01	1.30E-06	6.68E-04	2.66E-04	1.38E-03	6.93E-03	-2.85E-01

Note: PERE – use of renewable primary energy resources used as raw materials; PERT – Total use of renewable primary energy resources; PENRE – use of non-renewable primary energy excluding non-renewable primary energy resources used as raw materials; PENRM – use of non-renewable primary energy resources used as raw materials; PENRT – Total use of non-renewable primary energy resources; SM – Use of secondary materials; RSF – Use of renewable secondary fuels; NRSF – use of non-renewable secondary fuels; FW – use of net fresh water.

Scenario 100% glass landfill

Table 12 Resource use for 1 m² ELVIAL SL46 SI² CLASSIC SLIDING SYSTEM – Double glazing, scenario 100% glass landfill

Parameter	Unit	A1-A3	A4	C1	C2	C3	C4	D
PERE	MJ	3.39E+02	1.42E-03	8.25E-01	1.57E-01	1.98E+00	8.75E-01	-1.08E+02
PERM	MJ	0.00E+00	0.00E+00	0.00E+00	0.00E+00	0.00E+00	0.00E+00	0.00E+00
PERT	MJ	3.39E+02	1.42E-03	8.25E-01	1.57E-01	1.98E+00	8.75E-01	-1.08E+02
PENRE	MJ	1.19E+03	2.20E-02	1.57E+00	2.43E+00	3.68E+00	5.40E+00	-2.42E+02
PENRM	MJ	4.16E+01	0.00E+00	0.00E+00	0.00E+00	0.00E+00	0.00E+00	0.00E+00
PENRT	MJ	1.24E+03	2.20E-02	1.57E+00	2.43E+00	3.68E+00	5.40E+00	-2.42E+02
SM	kg	3.26E+00	0.00E+00	0.00E+00	0.00E+00	0.00E+00	0.00E+00	0.00E+00
RSF	MJ	0.00E+00	0.00E+00	0.00E+00	0.00E+00	0.00E+00	0.00E+00	0.00E+00
NRSF	MJ	0.00E+00	0.00E+00	0.00E+00	0.00E+00	0.00E+00	0.00E+00	0.00E+00
FW	m ³	7.18E-01	1.30E-06	6.68E-04	1.43E-04	1.07E-03	7.75E-03	-2.58E-01

Note: PERE – use of renewable primary energy excluding renewable primary energy resources used as raw materials; PERM – use of renewable primary energy resources used as raw materials; PERT – Total use of renewable primary energy resources; PENRE – use of non-renewable primary energy excluding non-renewable primary energy resources used as raw materials; PENRM – use of non-renewable primary energy resources used as raw materials; PENRT – Total use of non-renewable primary energy resources; SM – Use of secondary materials; RSF – Use of renewable secondary fuels; NRSF – use of non-renewable secondary fuels; FW – use of net fresh water.

4.3 Result of the LCA – Output flows, waste categories

Scenario 100% glass recycling

Table 13 Output flows, waste categories for 1 m² ELVIAL SL46 SI² CLASSIC SLIDING SYSTEM – Double glazing, **scenario 100% glass recycling**

Parameter	Unit	A1-A3	A4	C1	C2	C3	C4	D
HWD	kg	3.73E-06	5.90E-14	-1.06E-10	1.21E-11	2.41E-09	9.17E-11	-1.19E-07
NHWD	kg	1.60E+01	3.21E-06	1.03E-03	6.58E-04	1.39E-02	9.69E-01	-5.36E+00
RWD	kg	4.95E-02	2.30E-08	2.16E-04	4.72E-06	-3.63E-05	6.06E-05	-1.74E-02
CRU	kg	0.00E+00	0.00E+00	0.00E+00	0.00E+00	0.00E+00	0.00E+00	0.00E+00
MFR	kg	0.00E+00	0.00E+00	0.00E+00	0.00E+00	2.33E+01	0.00E+00	0.00E+00
MER	kg	0.00E+00	0.00E+00	0.00E+00	0.00E+00	0.00E+00	0.00E+00	0.00E+00
EEE	MJ	0.00E+00	0.00E+00	0.00E+00	0.00E+00	0.00E+00	4.54E+00	0.00E+00
EET	MJ	0.00E+00	0.00E+00	0.00E+00	0.00E+00	0.00E+00	8.27E+00	0.00E+00

Note: HWD – hazardous waste disposed; NHWD – Non-hazardous waste disposed; RWD – Radioactive waste disposed; CRU – Components for re-use; MFR – Materials for recycling; MER – Materials for energy recovery; EEE – Exported electrical energy; EET – Exported thermal energy

Scenario 100% glass landfill

Table 14 Output flows, waste categories for 1 m² ELVIAL SL46 SI² CLASSIC SLIDING SYSTEM – Double glazing, **scenario 100% glass landfill**

Parameter	Unit	A1-A3	A4	C1	C2	C3	C4	D
HWD	kg	3.73E-06	5.90E-14	-1.06E-10	6.51E-12	2.86E-09	4.44E-10	-1.23E-07
NHWD	kg	1.60E+01	3.21E-06	1.03E-03	3.54E-04	3.80E-03	1.75E+01	-4.97E+00
RWD	kg	4.95E-02	2.30E-08	2.16E-04	2.54E-06	3.46E-04	9.54E-05	-1.56E-02
CRU	kg	0.00E+00	0.00E+00	0.00E+00	0.00E+00	0.00E+00	0.00E+00	0.00E+00
MFR	kg	0.00E+00	0.00E+00	0.00E+00	0.00E+00	7.27E+00	0.00E+00	0.00E+00
MER	kg	0.00E+00	0.00E+00	0.00E+00	0.00E+00	0.00E+00	0.00E+00	0.00E+00
EEE	MJ	0.00E+00	0.00E+00	0.00E+00	0.00E+00	0.00E+00	4.54E+00	0.00E+00
EET	MJ	0.00E+00	0.00E+00	0.00E+00	0.00E+00	0.00E+00	8.27E+00	0.00E+00

Note: HWD – hazardous waste disposed; NHWD – Non-hazardous waste disposed; RWD – Radioactive waste disposed; CRU – Components for re-use; MFR – Materials for recycling; MER – Materials for energy recovery; EEE – Exported electrical energy; EET – Exported thermal energy

5 LCA – INTERPRETATION

The results are analyzed and interpreted for modules A1-A3 and modules C1-D for the product with the highest LCIA results within this EPD. In case the selected product has double and triple glazing variants, a comparison between these two options is provided. Results for module A4 are not further interpreted, as calculated only for 1 km. Finally, the end-of-life modules are compared to the most impactful modules (A1-A3) for the product with the highest LCIA results. This allows a comparison of the impacts of the two extreme end-of-life scenarios for glass: 100% glass recycling and 100% glass to landfill.

Production stages: modules A1 to A3.

The biggest contributor to the Environmental impact is aluminium production which is influenced by the mass of aluminium in the declared unit: the higher the aluminium mass, the higher the indicator.

Within the aluminium production processes, the primary aluminium production is dominant, especially the alumina production and the electrolysis. The recycled ingot production, which presents a much lower impact than the primary ingot production, is used in Module A1-A3 for the fraction of aluminium coming from recycling. The extrusion process which converts ingot, i.e. billets, into profile is much less significant. The LCA modelling and the impact of the primary aluminium production are detailed in the Environmental Profile Report 2018.

End-of-life stage: modules C1-C4 and module D

Modules C1-C3: they are negligible for all products compared to modules A1-A3 (<1.6% for scenario 100% glass recycling and <0.6% for scenario 100% glass landfill).

Module C4: the contribution of module C4 (disposal) is very limited (<3.4%) compared to modules A1-A3 and module D.

Module D: environmental benefits come from the recycling of aluminium. About 32.4% of GWP savings, for scenario 100% glass recycling, are obtained in Module D compared to the value calculated for module A1-A3 and 21.2% for scenario 100% glass landfill. These calculations show the relevance to consider Module D in the full assessment of the Sliding system in the building context.

6 OTHER INFORMATION

ELVIAL S.A. is a leading Greek company specializing in the design, manufacturing, and distribution of high-quality aluminium systems (opening & sliding systems, doors, folding doors, facades, shading systems, and cladding solutions). With a rich history spanning over several decades, ELVIAL has established itself as a trusted name in the construction and architectural industry. ELVIAL's commitment to innovation, precision engineering, and sustainable practices reinforced the Company's dominant position in both domestic and international markets.

ELVIAL's state-of-the-art production facilities, coupled with a team of skilled professionals, enable the Company to deliver cutting-edge solutions tailored to meet the unique needs of customers. From sleek and energy-efficient windows to robust and aesthetically pleasing facades, ELVIAL's product portfolio boasts exceptional quality, durability, and design flexibility. With an unwavering focus on customer satisfaction, ELVIAL strives to create inspiring spaces that combine elegance with functionality, enhancing the aesthetics and performance of architectural projects. As a responsible corporate citizen, ELVIAL is dedicated to sustainability and environmentally conscious practices, ensuring that the manufactured aluminium systems contribute to a greener and more sustainable future for the construction industry.

ELVIAL S.A. is founded on the concept of corporate responsibility and includes recognition of the need for positive actions and continuous support and development of the local communities that neighbour our facilities.

Through its Management Systems, certified according to ISO 9001:2015 and ISO 14001:2015, ELVIAL S.A. actively implements best practices regarding environmental protection through significant investments and measures, by optimizing the production cycle, implementing new procedures that reduce the energy footprint of its plants, and the vigilant prevention of any possibility of environmental pollution.

Additional information about ELVIAL's corporate responsibility and sustainability policy and the products can be found on the [website](#).

These EPD results have been calculated from an LCA tool for EPD, based on the GaBi database, initially realised by thinkstep GmbH in 2013 and updated by Ecoinnovazione in 2019 (Ecoinnovazione S.r.l. – spin-off ENEA Via della Liberazione, 6/c, 40128 Bologna BO www.ecoinnovazione.it)

7 REFERENCES

European Aluminium General Programme Instructions version 3, 23rd of September 2020

European Aluminium (2018) ENVIRONMENTAL PROFILE REPORT Life-Cycle inventory data for aluminium production and transformation processes in Europe February 2018

EN 15804:2012+A2:2019, Sustainability of construction works - Environmental Product Declarations – Core rules for the product category of construction products

International Organisation for Standardization (ISO), 2006 Environmental labels and declarations -- Type III environmental declarations -- Principles and procedures. ISO 14025:2006, Geneva

EN ISO 10077-2 Thermal performance of windows, doors and shutters — Calculation of thermal transmittance — Part 2: Numerical method for frames

BS EN 12207:2016 Windows and doors. Air permeability. Classification

EN 12208: Windows and doors – Water tightness – Classification

EN 12210: Windows and doors – Wind resistance – Classification

EN 1627: Pedestrian doorsets, windows, curtain walling, grilles and shutters - Burglar resistance - Requirements and classification

EN 14351-1: Windows and doors - Product standard, performance characteristics - Part 1: Windows and external pedestrian doorsets